



PALACE WOOD PRIMARY SCHOOL

Dear Parents and Carers

This week it has been lovely to see year groups mixing at playtime and lunchtime. I've spoken to a number of children to ask them how they feel about this first step towards a return to more normal schooling and all were very positive about the change. The children seem to have really enjoyed mixing with the other class in their year group and it has also meant they have more space to play again. I am hoping to start face to face year group assemblies in the next week. The two classes will still sit as a class group with a socially distanced gap between them but they will be in the same place for an assembly – another small step on our school 'road map'.

As you will see from the information below the children have enjoyed another week of interesting and diverse topics. We've sketched woolly mammoths, built castles, found out about Antarctica, carried out maths investigations and even gone on a walkabout with a wombat!

Next week is Mental Health Awareness week and the theme this year is connecting with nature. The children will be taking part in some activities and assemblies and will be reminded to speak out and seek help if they are worried or anxious about anything. Click on the link [Mental Health Awareness Week 2021](#) for more information and some great ideas on how families can connect with nature. Have a great weekend.

Mrs Clare Cairns

DATES FOR YOUR DIARY

Tuesday 18 th May	Consultations – <i>You may now book your Zoom appointment via parentmail</i>
Wednesday 19 th May	Consultations
Thursday 20 th May	Consultations
Monday 31 st May – Friday 4 th June	School Holidays
Monday 7 th June 2021	INSET day – school closed to children
Tuesday 15 th June 2021	Class Photos
Wednesday 21 st July	Break Up

INSET DAYS FOR NEXT YEAR

Wednesday 1st September 2021, Thursday 2nd September 2021, Monday 1st November 2021
Tuesday 4th January 2022, Monday 6th June 2022

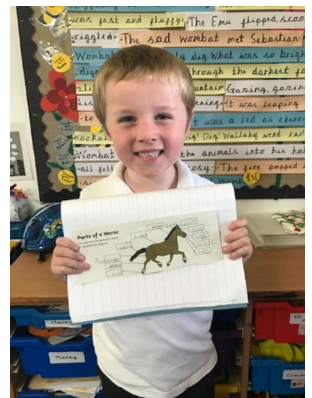
PALACE WOOD PRIMARY SCHOOL



In **EYFS** this week the highlight has been playing with all our friends in the parallel class. We had missed them so much. Today, we were building a castle together.

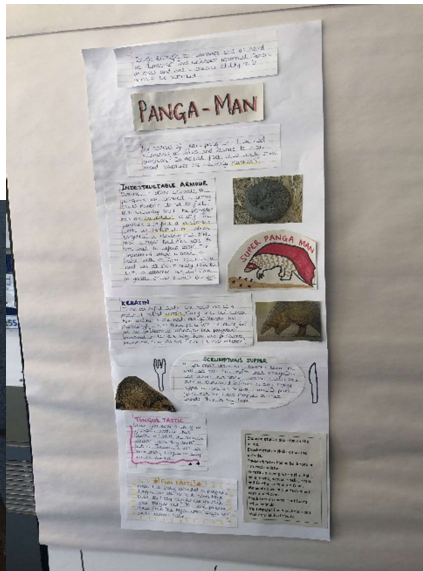


In **Year 1** this week we have been learning about arrays in Maths and how to tell the difference between a row and a column. In English we have been writing up our own version of the 'Wombat goes Walkabout' where the mum finds that her child is missing and goes on an adventure to find them. In Science we have been looking at different animals and their body parts and in Geography we have begun learning about Antarctica. In Art we have been continuing with our work on creating art inspired by Jackson Pollock and in PSHE we have been discussing what similarities and difference we all share.

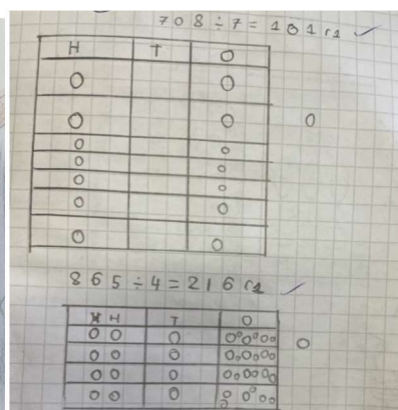


In **Year 2**, we have been learning about cave drawings in art. On Tuesday they sketched some woolly mammoths and explored blending chalk to add detail. The children worked very hard to draw the woolly mammoths and they were very proud of what they created.

PALACE WOOD PRIMARY SCHOOL



This week **Year 3** finished their non-chronological reports about the mysterious pangolin. The children enjoyed finding out about the life of a pangolin and reasons why it is classified as an endangered animal. Did you know that a pangolin is covered in strong scales that even a lion cannot destroy? These scales are made out of a material called Keratin, which is the same substance that our hair and nails are made from!



In **Year 4** this week we have been looking at different ways to divide. We have used resources to help us and the whole part whole method. In Science we have been continuing to learn about classifying different animals. We also practised our sketching skills in art. We decided to draw some of the insects we have been learning about. We sketched and shaded them in carefully.

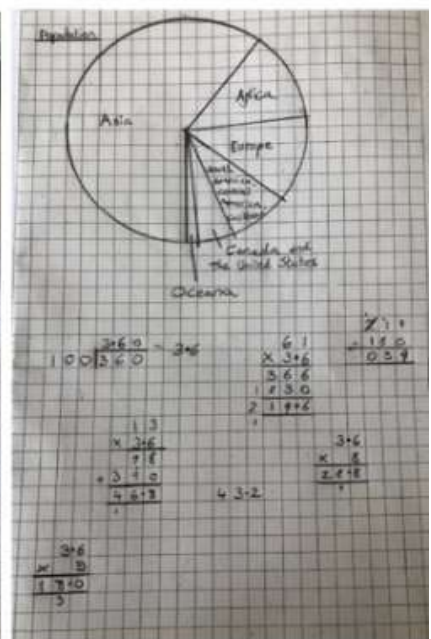
PALACE WOOD PRIMARY SCHOOL

Year 5 have started monoprinting in art - we started with some fantastic sketching, giving ourselves 30 seconds to draw what we saw. We are amazed at the results of simple line drawings as a starting point for our printing.

By layering and adding extra lines we can start to see how building up layers of printing can impact a picture - it is all really exciting!



Year 6 have been learning how to represent and interpret data during their maths lessons. This culminated in a session of investigations where the children explored the best ways to represent different forms of data. Some even ventured into the realms of pie charts ☺.



PALACE WOOD PRIMARY SCHOOL

Times Table Rock Stars:

Kieran – Rhinos
Daniel – Tigers
Adam – Lions

Star spellers of the week

Milaya – Monkeys
Kateko - Lions
Ben - Rhinos

At Palace Wood we
Give it our best
Respect one another
Overcome obstacles
Work together

Remember to send
us news of
children's out-of-
school
achievements!

This week's Always Children

Gabby in Hippos, Tilly in Rhinos
Isra in Tigers, Matthew in Lions
Danny in Leopards, Ella in Panthers
Sophie in Crocodiles, Bilal in Monkeys
Theo in Pandas, Sammy in Zebras
Menaal in Giraffes, Samuel in Bears
Scarlett in Elephants, Nelly in Penguins

Rowling achieved the
most team points this
week.

Mrs Cairns' Always Children:

Evelyn in Crocodiles